

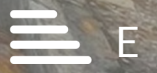


OAKFIELD



Harold Road, Hastings

£1,425 Per Calendar Month



SUMMARY

Stunning Three-Bedroom House within close proximity to the Hastings Old Town.

This beautifully presented three-bedroom house is situated in the heart of the highly sought-after Hastings Old Town and has been finished to a modern, high standard throughout.

Upon entering, you are welcomed by a useful entrance porch leading into a bright and spacious open-plan living and dining room. The stylish fitted kitchen features modern appliances and provides direct access to the rear garden. The outdoor space is arranged over tiers, offering a combination of patio and lawn areas. There is also convenient side access to the garden, along with access to a useful basement storage area from the outside. A separate ground-floor WC completes the accommodation on this level.

On the first floor, there are three generously sized bedrooms, all well-presented and offering excellent living space. The family bathroom is finished to a modern standard. The property features white décor and contemporary grey carpets.

The location is exceptional, with a wide variety of independent shops, cafés, restaurants, and local amenities just moments away, while the historic charm of Hastings Old Town is right on your doorstep.

Further benefits include a private driveway providing off-road parking, private front and rear gardens, gas central heating, and excellent storage space.



Please note:

An annual household income of £42,750 will be required for the affordability criteria of this property.

Available Early August 2026.



Living / Dining Room

22'10" x 12'4"

Kitchen

10'3" x 6'4"

Bedroom One

12'4" x 11'2"

Bedroom Two

11'4" x 11'0"

Bedroom Three

8'3" x 6'10"

Bathroom

6'5" x 5'0"

WC

Council Tax Band C - £2,270.34 Per Annum













INFORMATION

Local Authority

Hastings Borough Council

Council Tax Band

C

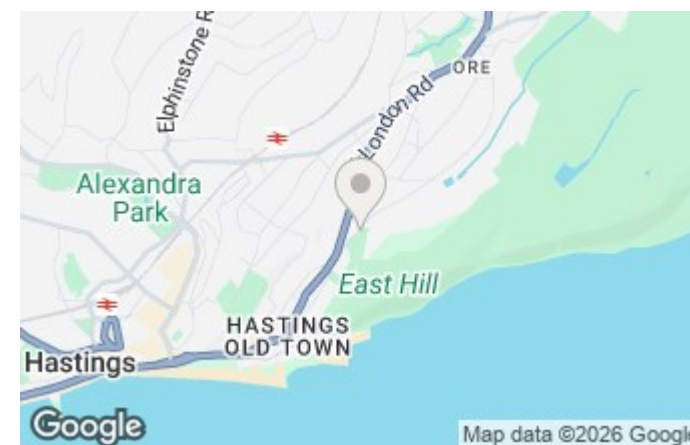
Opening Hours

Monday to Friday	9.00am - 5.30pm
Saturday	9.00am - 4.00pm

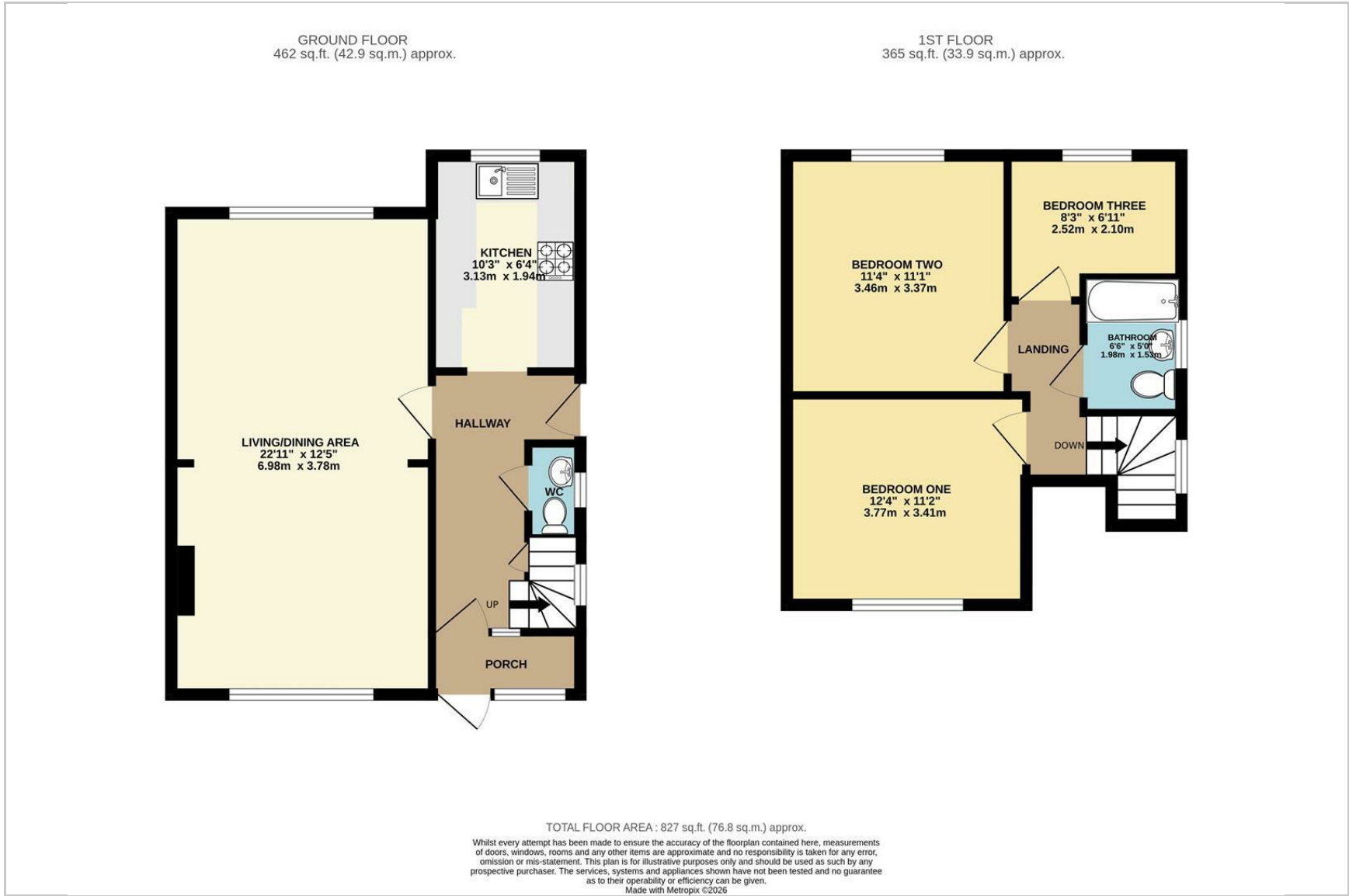
Viewings

Please contact us on 01424 446644 if you wish to arrange a viewing appointment for this property or require further information.

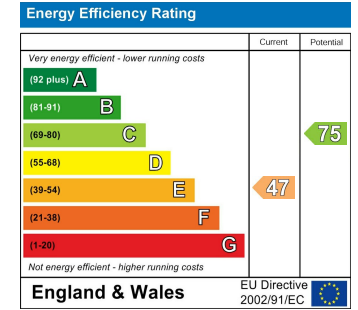
Area Map



Floorplan



Energy Efficiency Graph



These particulars, whilst believed to be accurate are set out as a general outline only for guidance and do not constitute any part of an offer or contract. Intending purchasers should not rely on them as statements of representation of fact, but must satisfy themselves by inspection or otherwise as to their accuracy. No person in this firm's employment has the authority to make or give any representation or warranty in respect of the property.